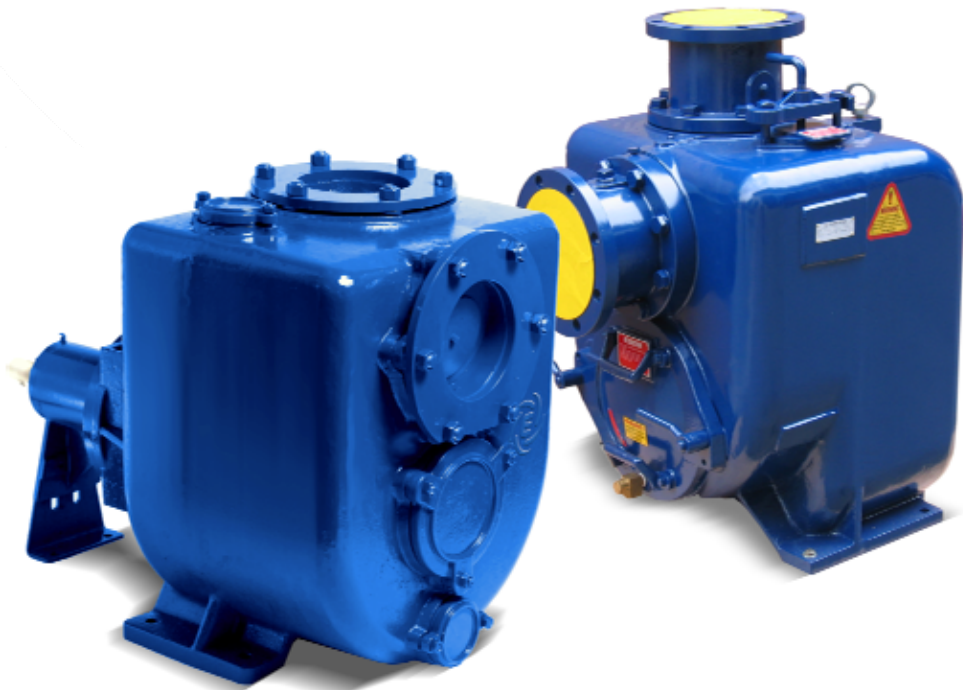


EJ series

Self-Priming Centrifugal Pumps



EJseries - Coding System

Eg. **EJS 40-110 XX XX XX**
EJT 50-160

XXX XX-XXX XX XXXX XXXX

Series

EJS = Shaft (bare) pumps
EJT = Large Flow pumps
EJU = High Head pumps
EJM = Mono Block pumps

Discharge Size - Impeller Nominal Size

40-110	80-140	80-280	100-280	150-318	200-375
50-120	80-215	100-248	150-250	150-400	250-375
50-160	80-223	100-250	150-315	200-300	300-457

Seal Type

10 = Sic Vs Sic/Viton
20 = Tc Vs/Viton
30 = C Vs Ceramic/Viton

Tc = Tungsten Carbide
C = Carbon
Sic = Silicon Carbide

Body / Impeller / Shaft Material

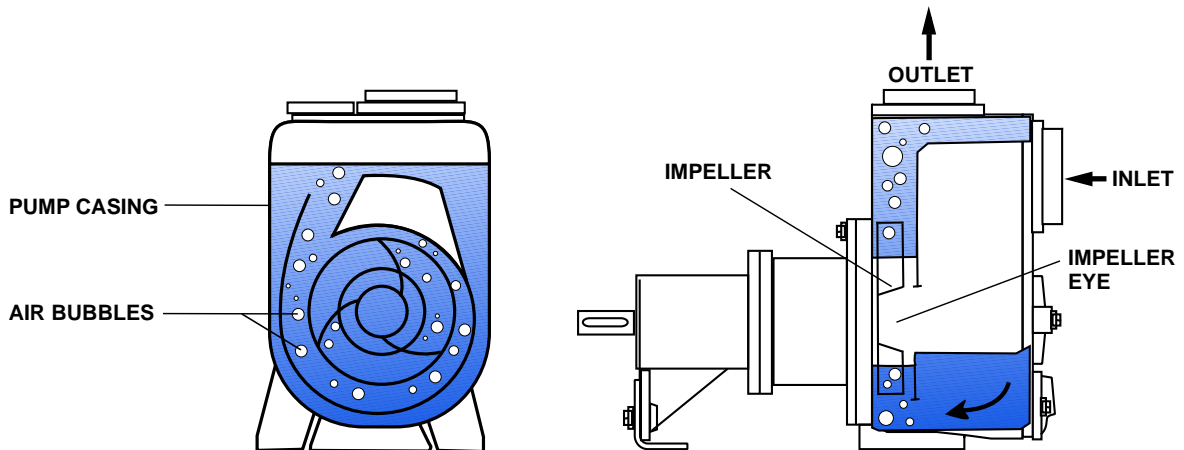
Codes	Casing	Impeller	Shaft
CD	CI	Ductile Iron	2Cr13 (420)
CA	CI	A 216 (Carbon Steel)	2Cr13
CAD	CI	Harden Iron	SS304
CB	CI	Bronze	SS304
C20	CI	CD4MCU	SS304
CS04	CI	SS304	SS304
BB	Bronze	Bronze	SS316
D4MC	Duplex SS	Duplex SS	SS316
SS04	SS304	SS304	SS304
SS16	SS316	SS316	SS316
ADI	Harden Iron	Harden Iron	SS304
HH	Hastelloy	Hastelloy	SS316

Special Option

Engine

EB = Engine on baseplate
ET1 = Engine on Trolley - off road
ET2 = Engine on Trolley - on road

EJseries - Self-Priming Centrifugal Pumps



Principal of Self Priming

Upon starting the pump, pressure drop occurs at the eye of the impeller which will give rise to pressure differences within the pump system (pump casing & suction pipe) and outside the pump system. As the pressure continues to drop in the pump system, a mixture of liquid and air will start to flow into the pump due to higher atmospheric pressure outside the pump system.

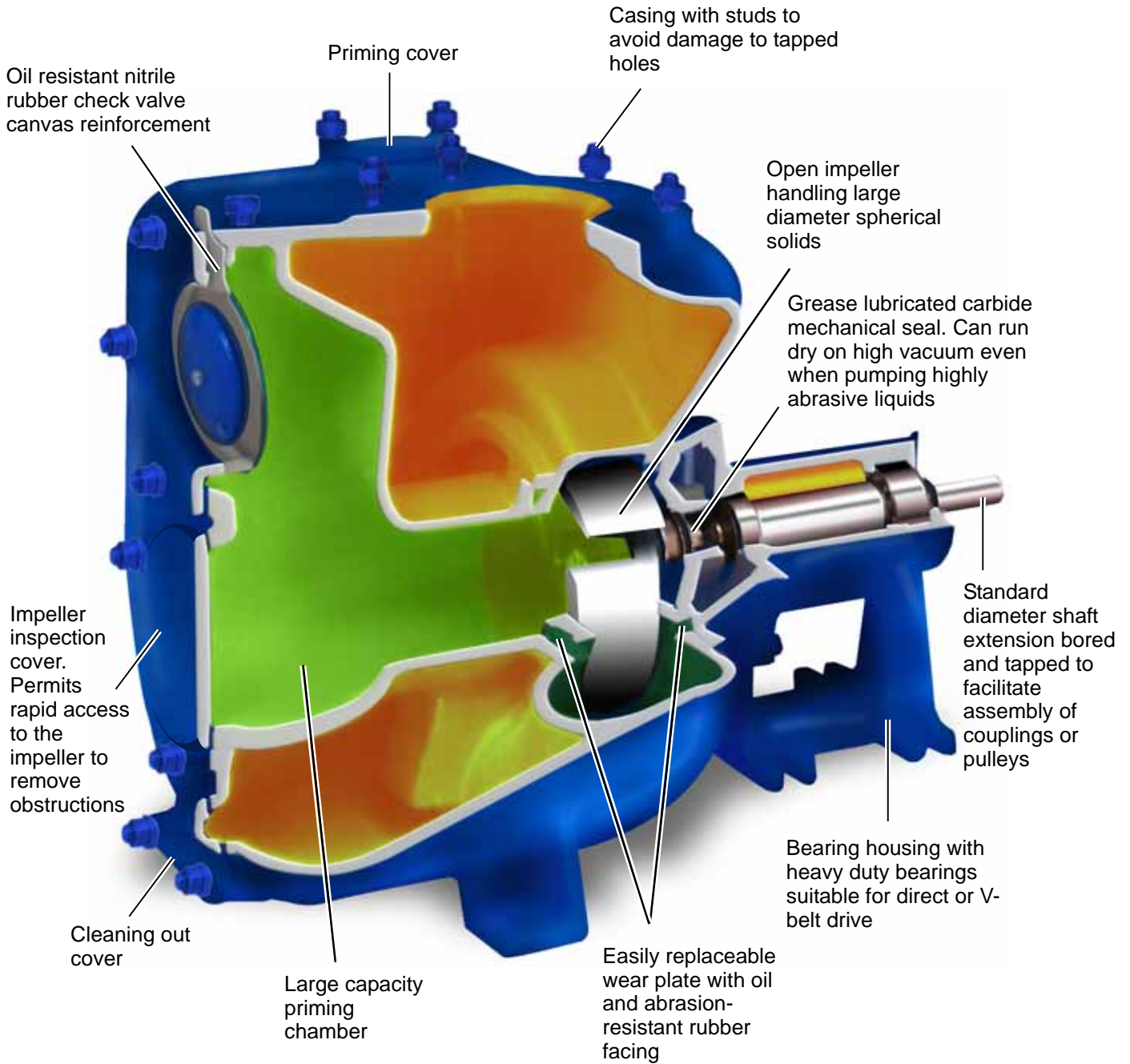
The mixture of liquid and air will flow through the casing chamber designed like a diffuser through the inlet and then to the discharge port. At the discharge port, air being lighter will be extricated through the discharge piping. The liquid being heavier will fall back into the pump chamber and re-mix with the inlet liquid. This process is repeated till air in the suction pipe and pump casing is fully emptied and filled with liquid. At this point, the pump will then be fully primed and achieve the self-priming effect.

Application :

- **Industry**
 - Waste water treatment
 - Transfer of low viscosity petroleum products
 - Recovery of dirty solvents
 - Emergency duty
- **Civil engineering / civil defence**
 - Sewer by-pass
 - Recovery of hazardous liquids
 - Flood drainage
- **Marine duty**
 - Bilge pumping
 - Sanitary duty
 - Loading and unloading
 - Washing
 - Fire fighting
- **Sewage**
 - Lift stations
 - Sewage by-pass
 - Treatment
- **Construction**
 - Dewatering
 - Ground water control
 - Water supply
- **Agriculture**
 - Surface irrigation
 - Liquid manure
 - Distribution of liquid animal feed



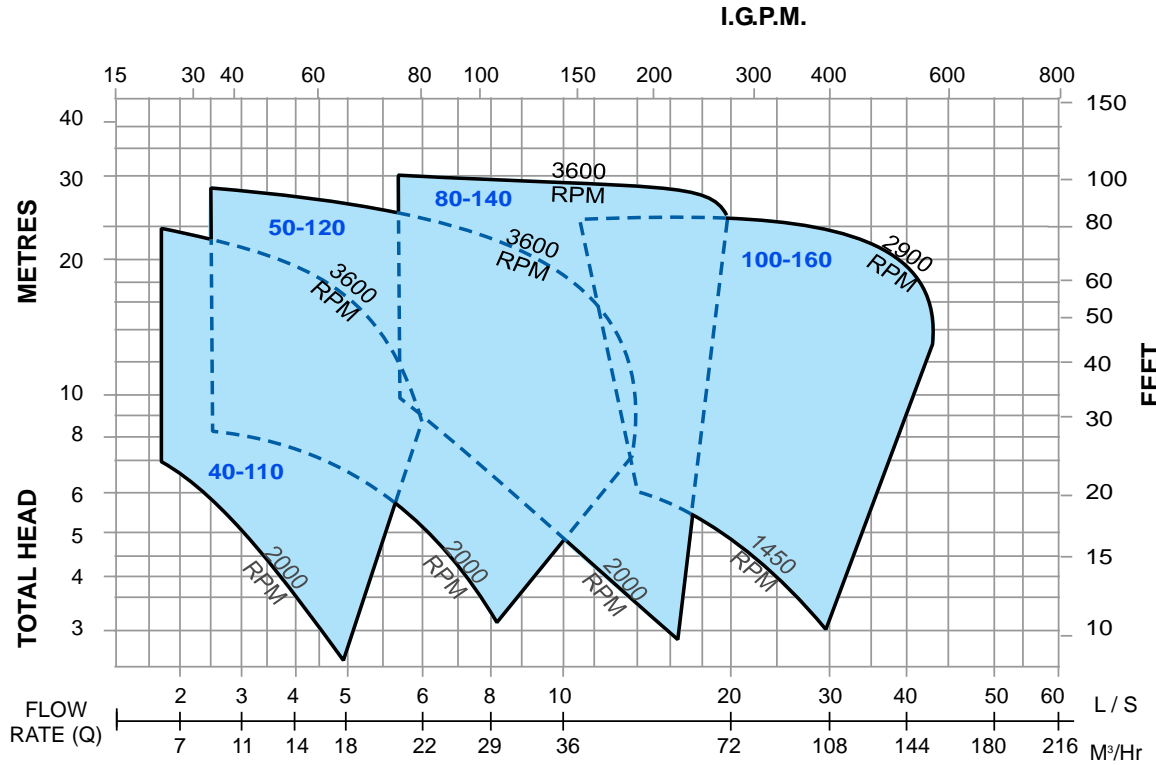
EJS - Sectional Parts



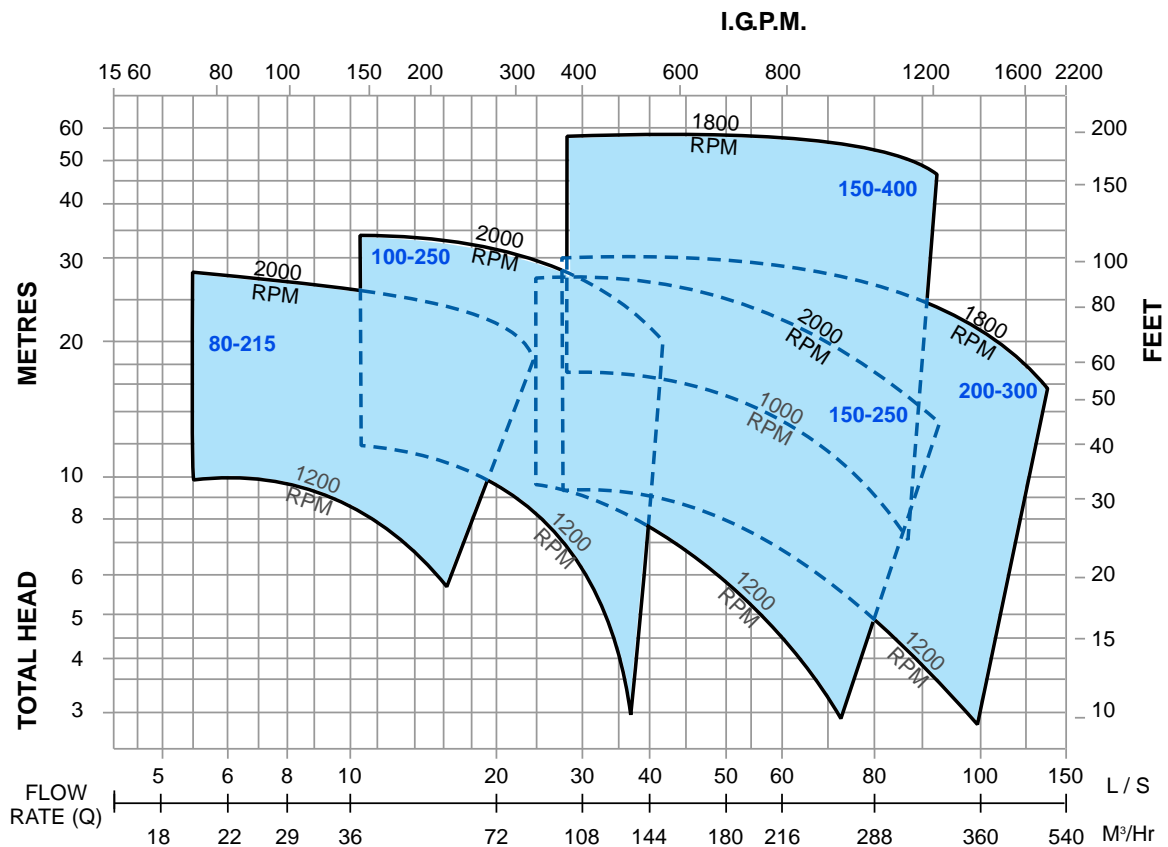
Pump Model	Port Size		Solid Size	50hz							
	mm	in	Ømm	Capacity m3/hr			Head m			RPM	Motor kW
EJS40-110	40	1 1/2"	20	22	15	5	5.5	11	15	2900	1.1
EJS50-120	50	2"	25	44	30	10	5	12	18	2900	2.2
EJS80--140	80	3"	28	70	40	20	13	18	20	2900	4
EJS-80-215	80	3"	40	80	45	20	7	13	15	1450	4
EJS100-250	100	4"	50	150	80	40	7	15	18	1450	7.5
EJS150-250	150	6"	76	300	200	80	5	11	15	1450	11
EJS150-400	150	6"	50	380	200	80	18	36	38	1450	45
EJS200-300	200	8"	60	480	320	120	8	15	20	1450	22

EJS - Family Curves

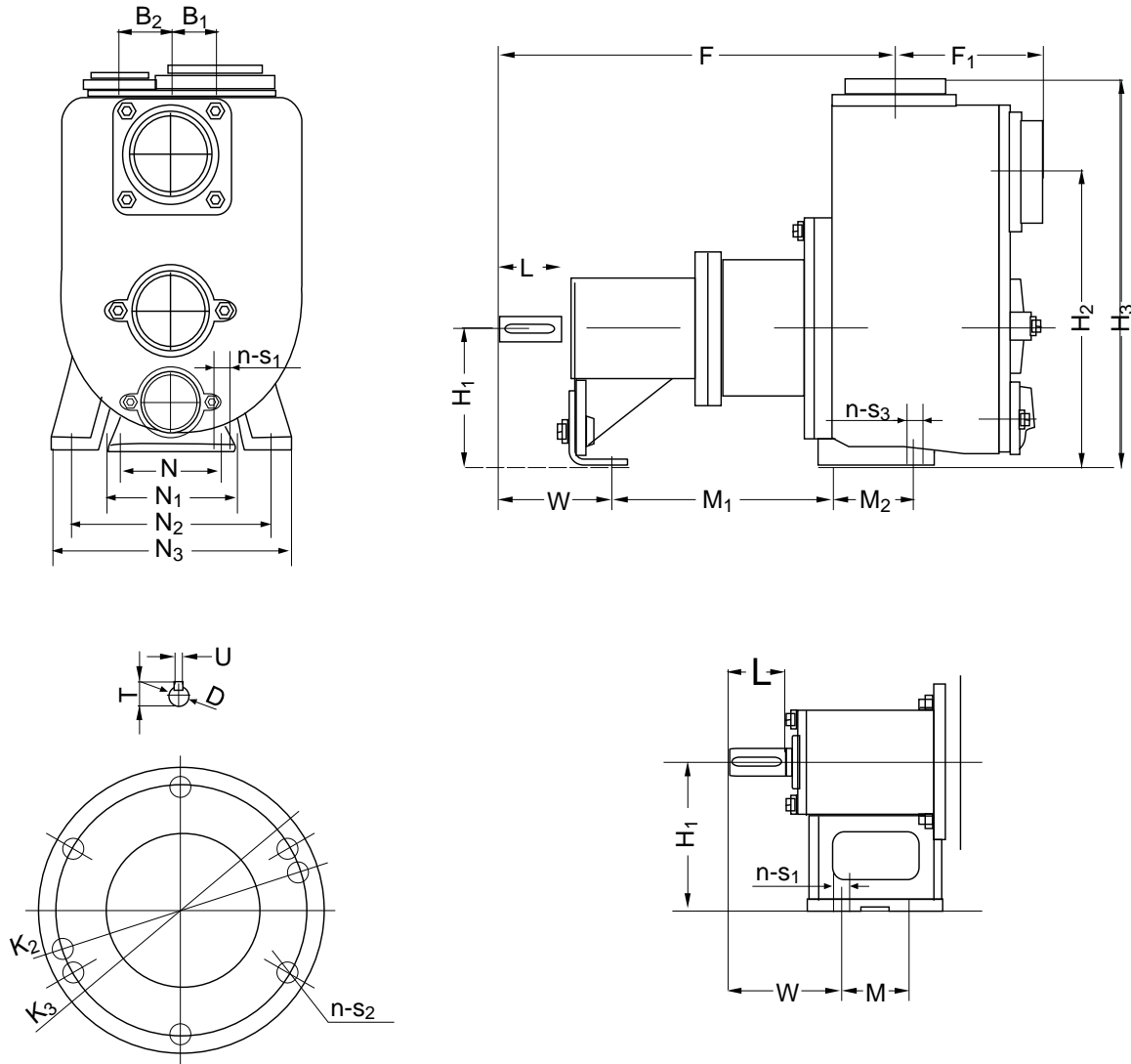
Norminal Speed - 2 Poles



Norminal Speed - 4 Poles

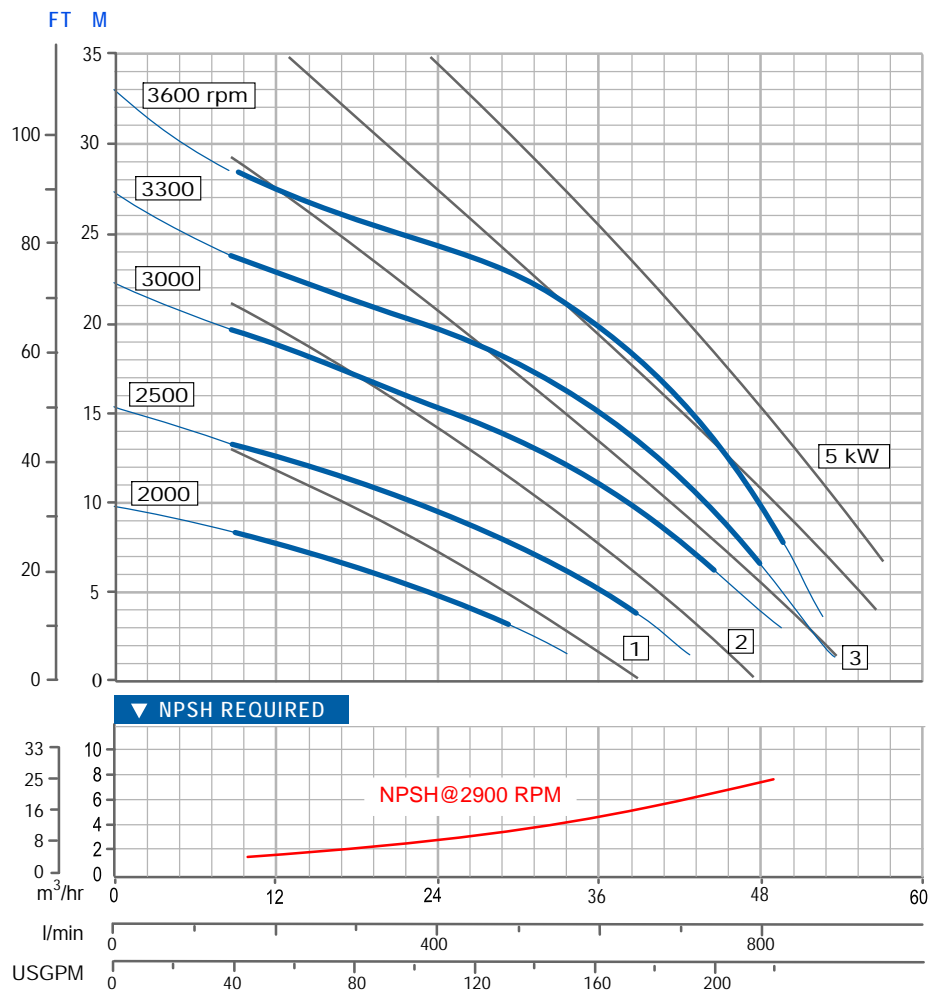
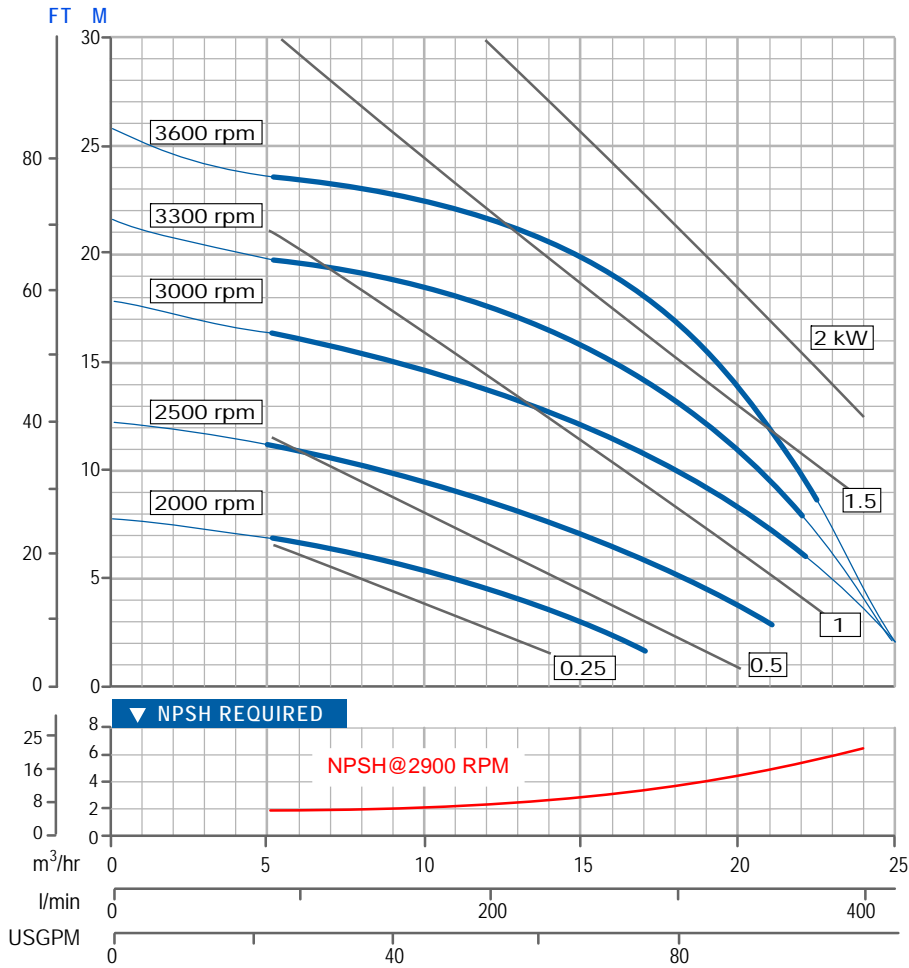


EJS - Installing Dimensions



Pump Model	Port Size		Pump Dimension								Foot Dimension						Shaft End				Net Weight (kg)				
	mm	in	B ₁	B ₂	B ₃	H ₁	H ₂	H ₃	F	F ₁	N	N ₁	N ₂	N ₃	W	M	M ₁	M ₂	n-S ₁	n-S ₃		L	T	U	D
EJS40-110	40	1 1/2"	30	40	165	90	163	237	263	75	80	102			70	50			4-Ø10		40	22	6	19	21
EJS50-120	50	2"	36	45	210	110	206	326	300	114	103	128			80	50			4-Ø12		40	22	6	19	24
EJS80-140	80	3"	43	55	240	135	290	383	390	148	90	130	200	243	106		222	80	2-Ø14		60	31	8	28	65
EJS-80-215	80	3"	70	85	302	160	310	410	458	155	150		245		110	125	150	100	4-Ø14	4-Ø14	60	31	8	28	94
EJS100-250	100	4"	160	85	420	200	355	485	470	275	110	160	295	160	130		355	95	2-Ø15		80	35	10	32	184
EJS150-250	150	6"	90	140	480	250	455	590	570	280	110	160	350	410	130		330	170	2-Ø15	6-Ø18	80	35	10	32	237
EJS150-400	150	6"	280	308	730	350	645	821	699	374	150		450	510	181		477.5	200	2-Ø17	8-Ø19	110	59	16	55	420
EJS200-300	200	8"	75	175	575	315	535	690	822	290	150	200	450	510	165		496	200	2-Ø18	8-Ø18	110	45	12	42	427

Pump Model	Flange Dimension		
	K ₂	K ₃	n-S ₂
EJS150-250	240	276	6-Ø18
EJS150-400	240	276	8-Ø19
EJS200-300	280	320	8-Ø18



EJS 40-110

Performance Curve

Impeller Dia. : 110mm
Max Solids : 20mm
R.P.M. from 2000 to 3600rpm

EJS 50-120

Performance Curve

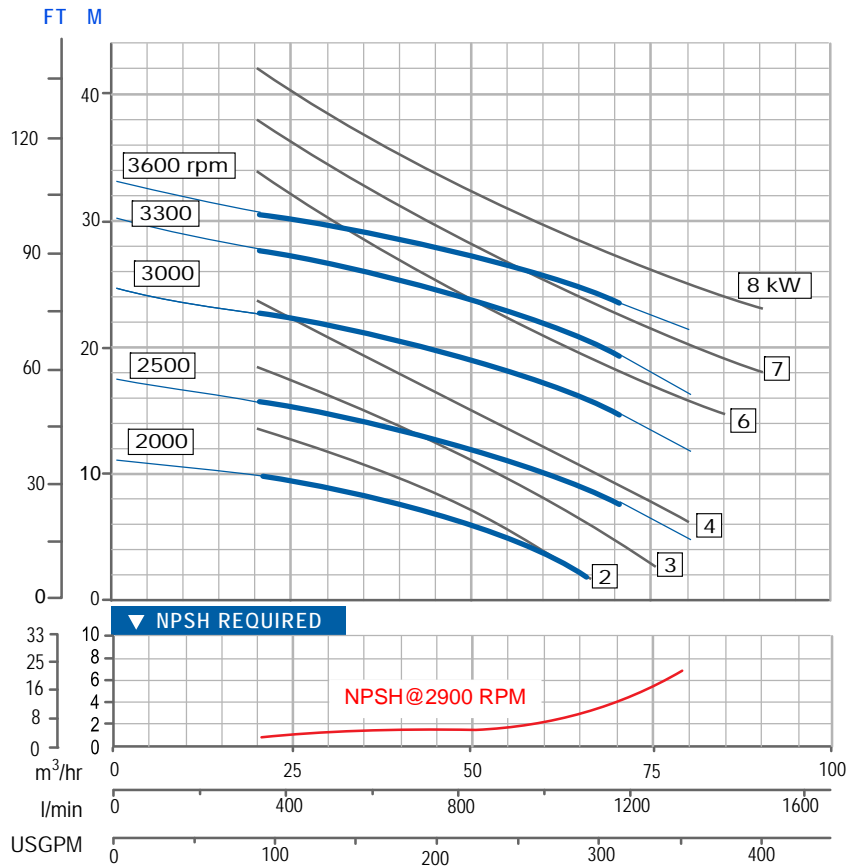
Impeller Dia. : 120mm
Max Solids : 25mm
R.P.M. from 2000 to 3600rpm

EJS 80-140 Performance Curve

Impeller Dia. : 140mm

Max Solids : 28mm

R.P.M. from 2000 to 3600rpm

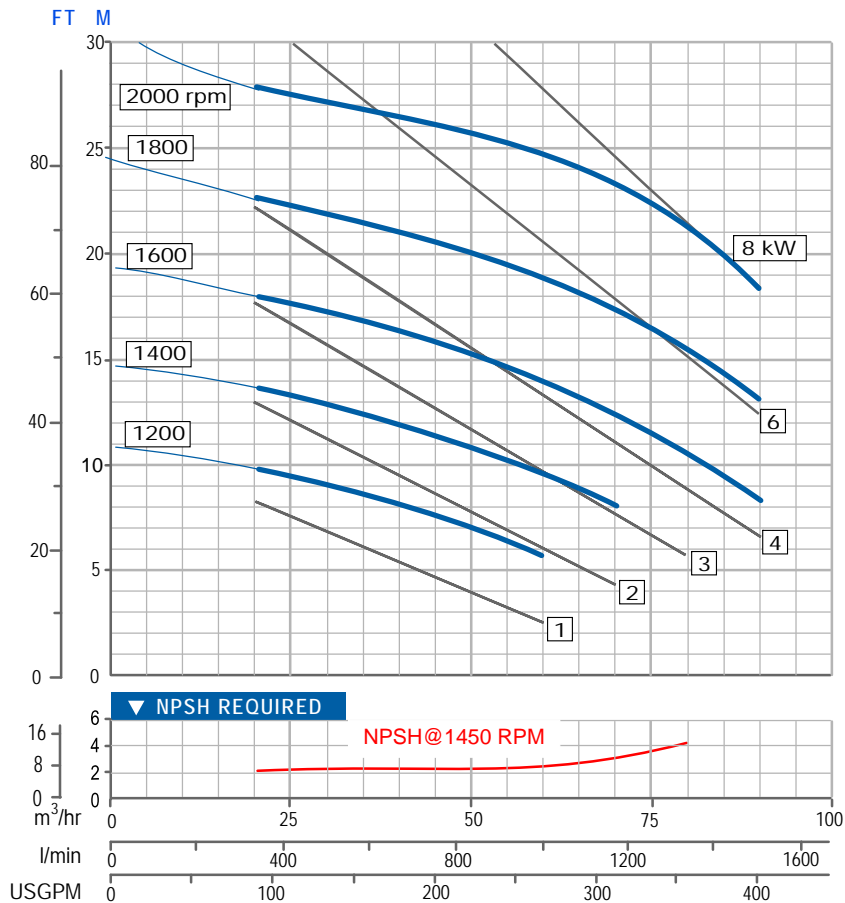


EJS 80-215 Performance Curve

Impeller Dia. : 215mm

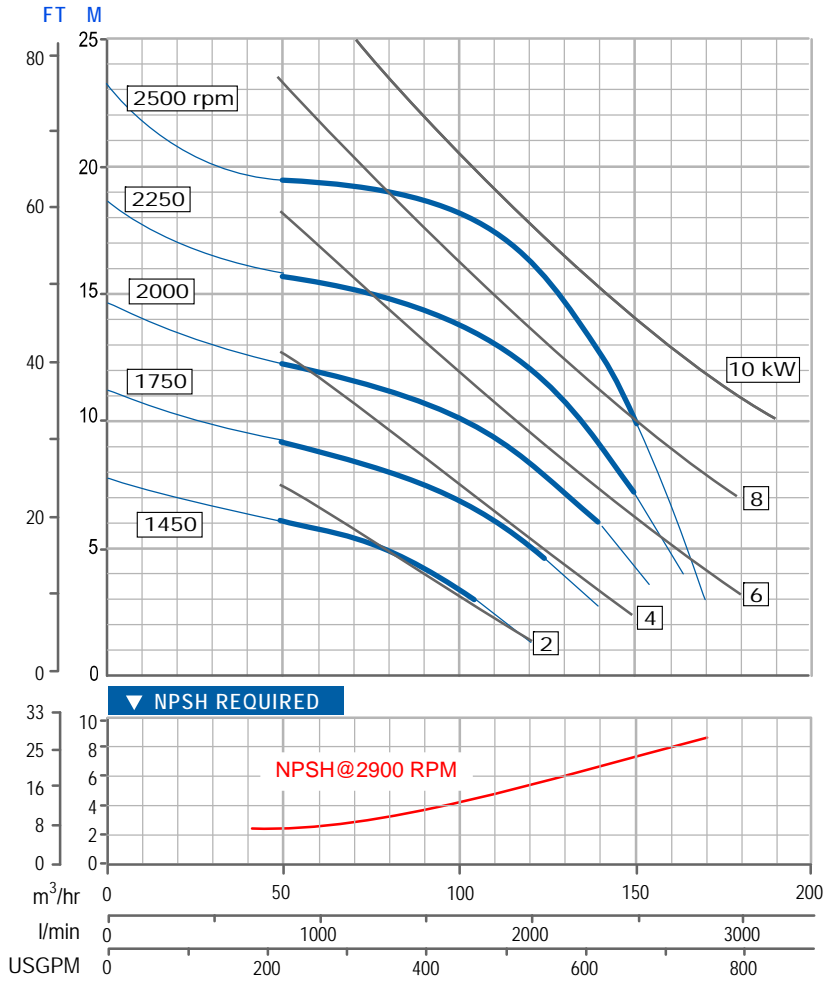
Max Solids : 40mm

R.P.M. from 1200 to 2000rpm



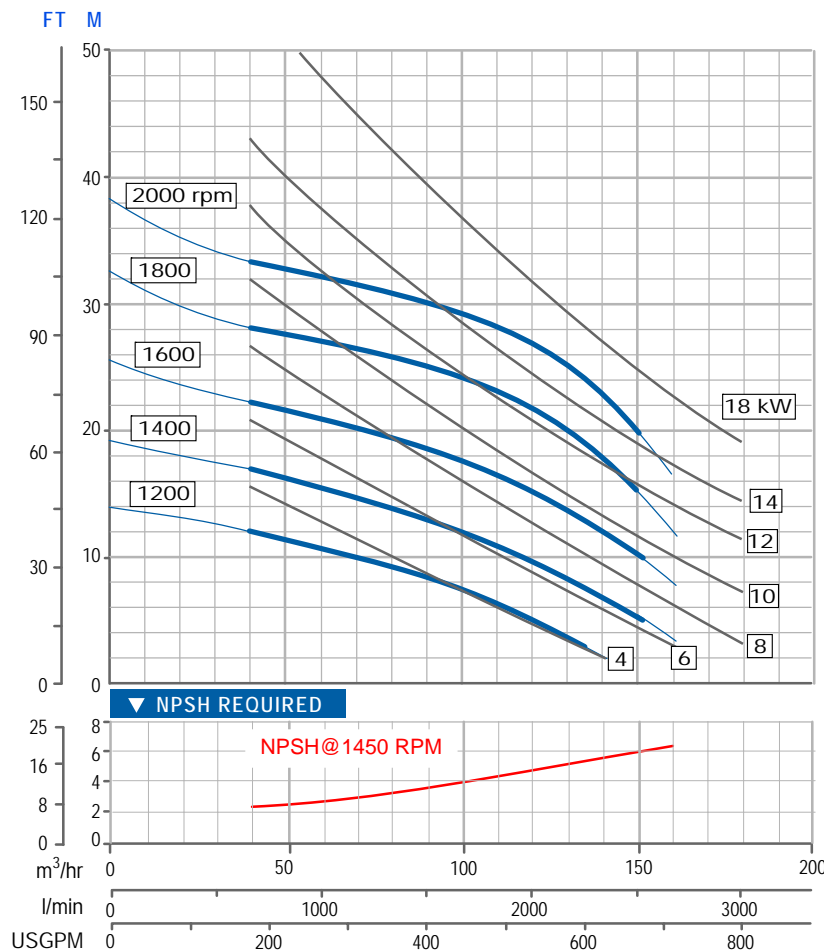
EJS 100-160 Performance Curve

Impeller Dia. 160mm
Max Solids : 45mm
R.P.M. from 1450 to 2500rpm



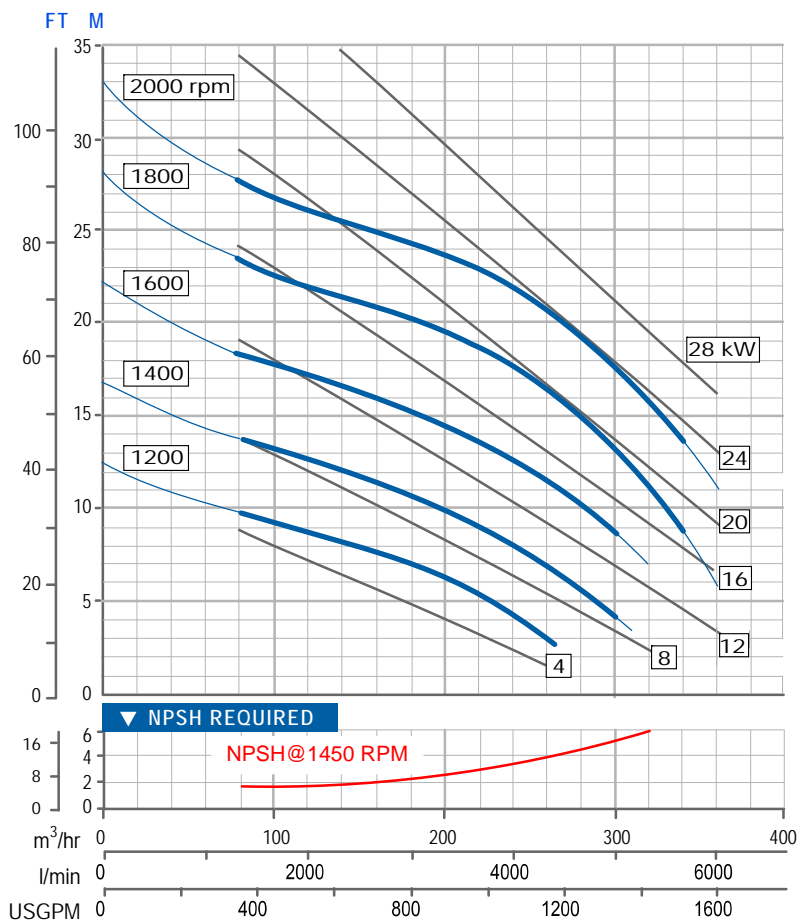
EJS 100-250 Performance Curve

Impeller Dia. : 250mm
Max Solids : 50mm
R.P.M. from 1200 to 2000rpm



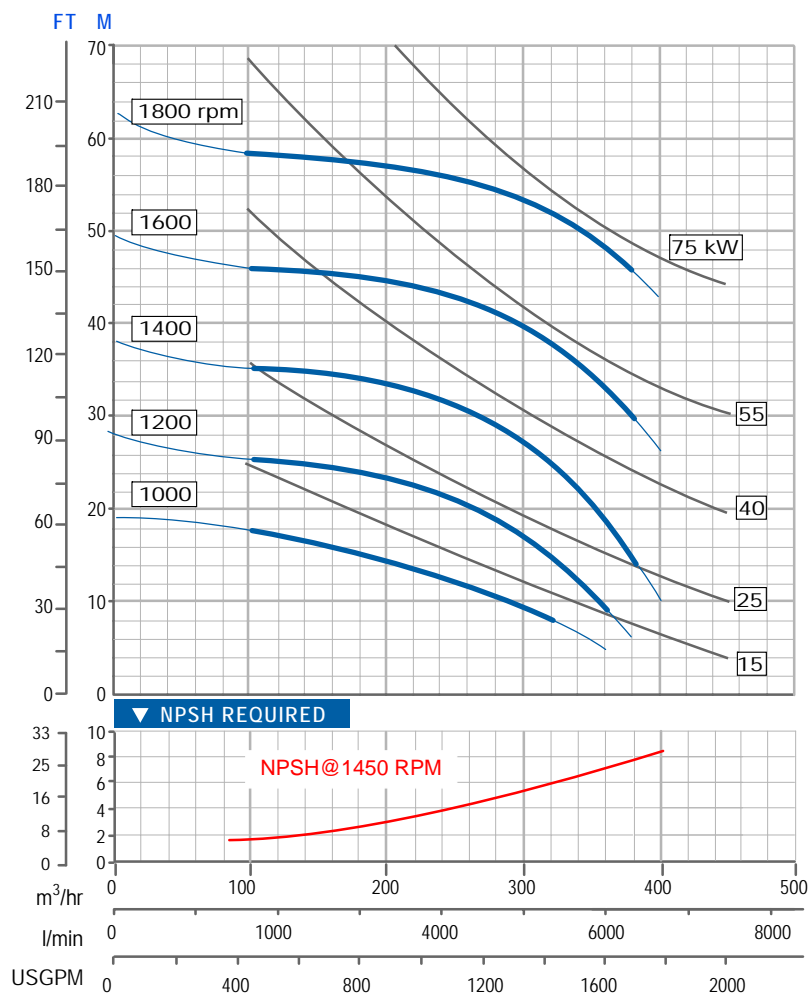
EJS 150-250 Performance Curve

Impeller Dia. : 250mm
 Max Solids : 76mm
 R.P.M. from 1200 to 2000rpm



EJS 150-400 Performance Curve

Impeller Dia. : 400mm
 Max Solids : 50mm
 R.P.M. from 1000 to 1800rpm

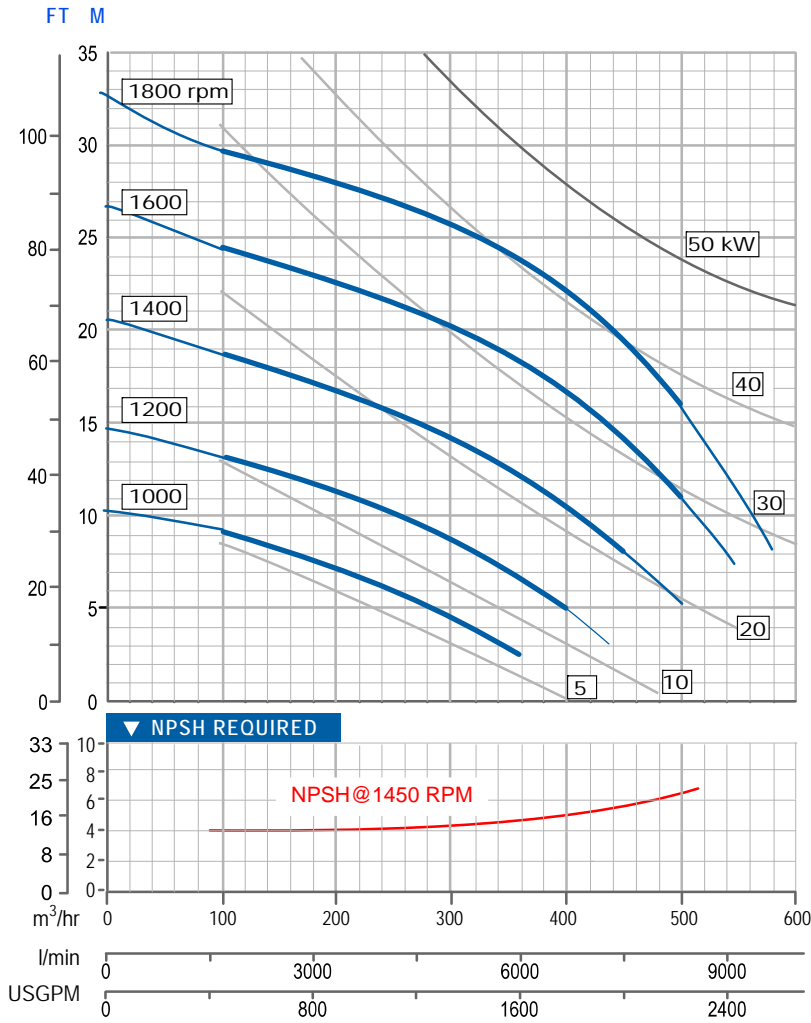


EJS 200-300 Performance Curve

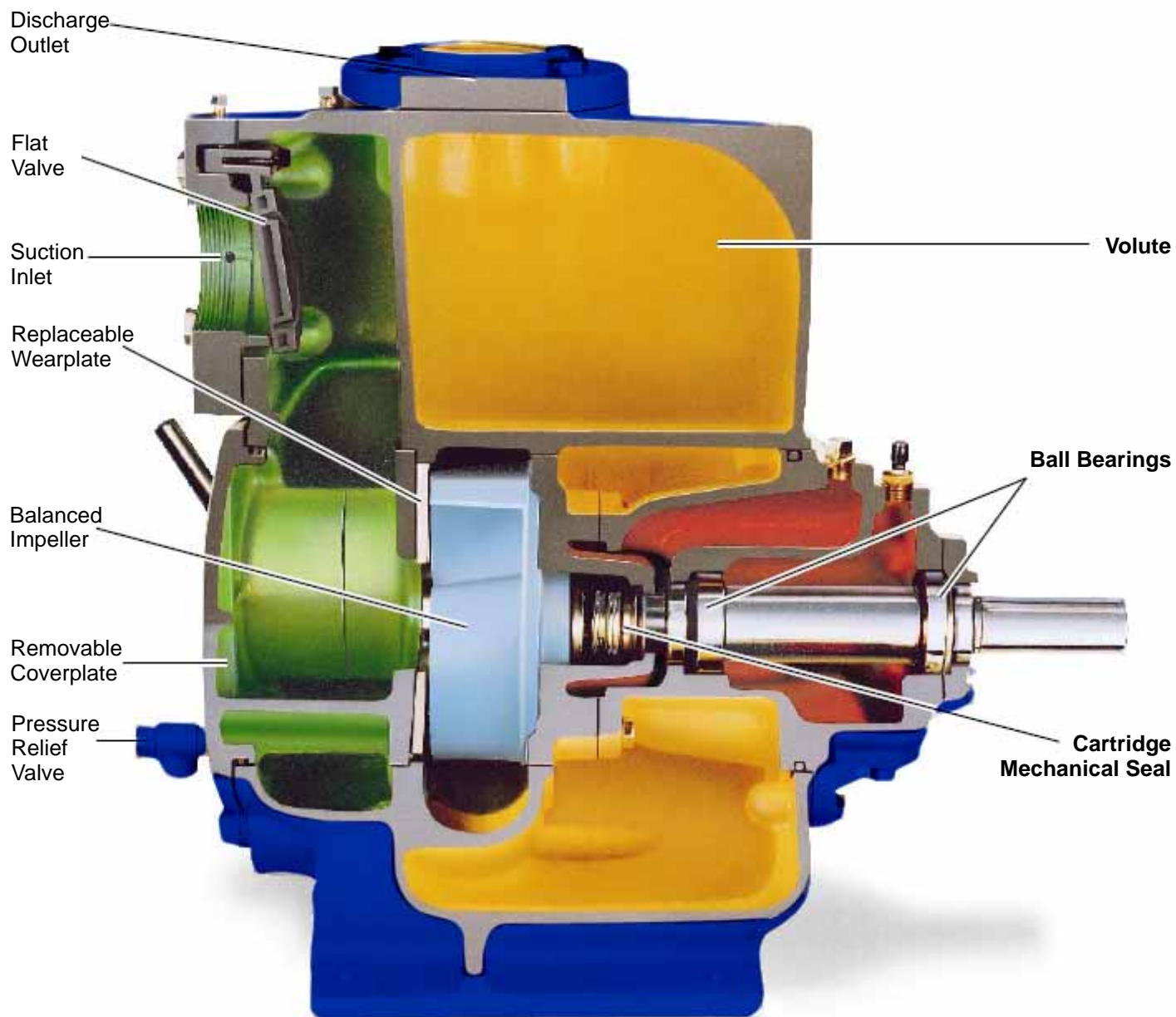
Impeller Dia. : 300mm

Max Solids : 60mm

R.P.M. from 1000 to 1800rpm



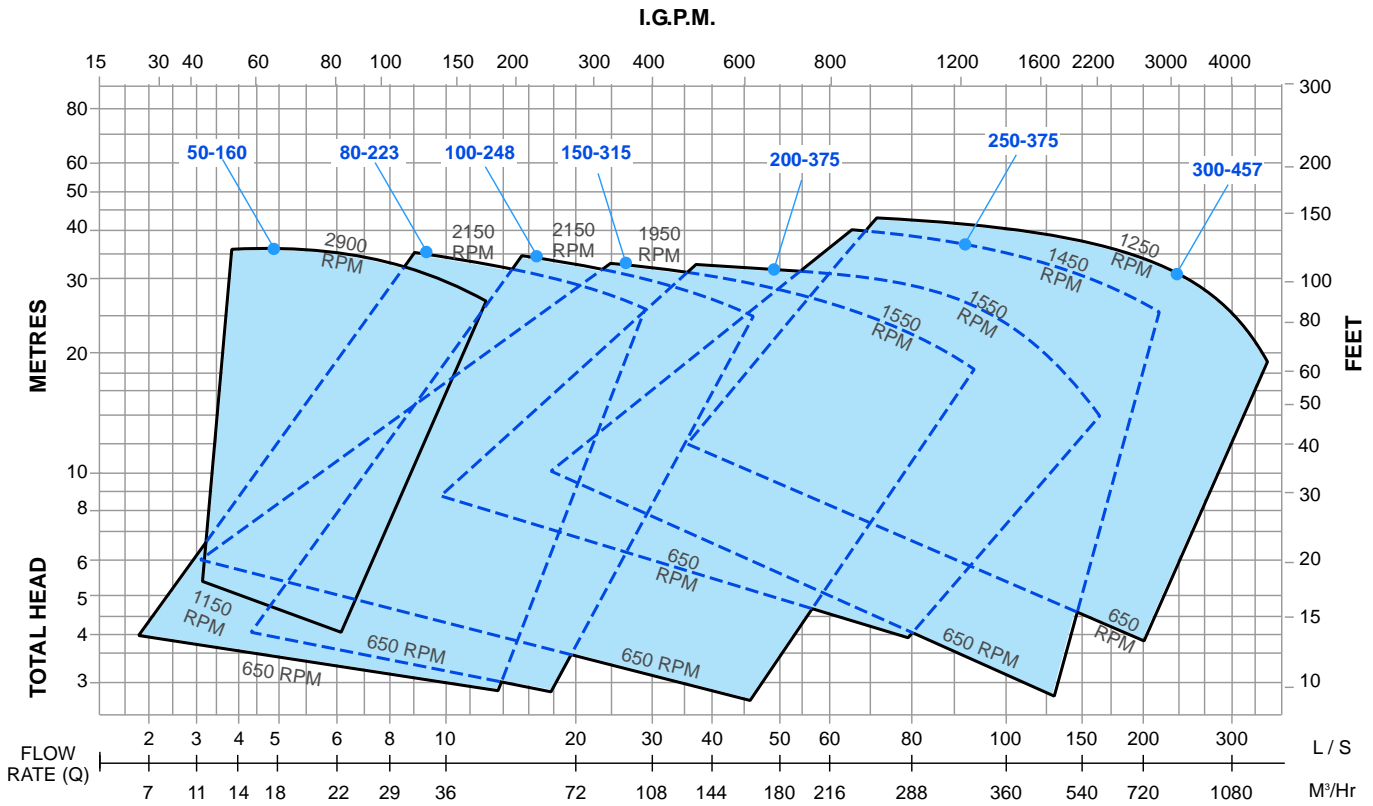
EJT - Sectional Parts



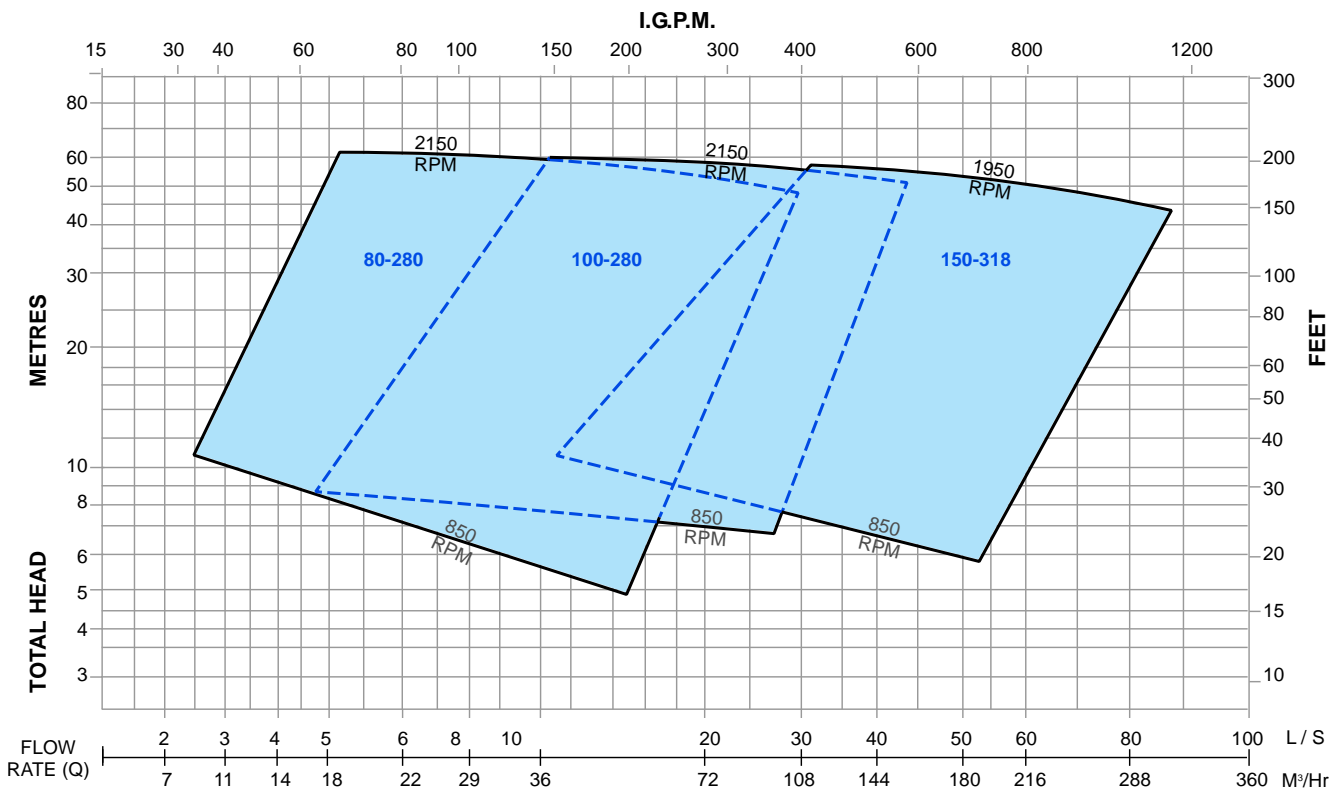
Pump Model	Port Size		Solid Size	50/60hz							
	mm	in	Ømm	Capacity m3/hr			Head m			RPM	Motor kW
EJT50-160	50	2"	44	47	30	14	27	31	35	2900	15
EJT80-223	80	3"	64	105	70	31	25	30	34	2150	25
EJT100-248	100	4"	76	180	110	55	24	30	35	1950	30
EJT150-315	150	6"	76	330	225	85	18	24	32	1550	40
EJT200-375	200	8"	76	590	360	140	12	26	33	1550	75
EJT250-375	250	10"	76	760	470	220	23	33	39	1450	100
EJT300-457	300	12"	76	1250	800	250	19	34	43	2150	125
EJU80-280	80	3"	21	85	55	20	49	58	61	2150	30
EJU100-280	100	4"	29	145	100	35	74	55	60	2150	50
EJU150-318	150	6"	32	305	210	98	44	53	58	1950	75

EJT - Family Curves

EJT: 2" - 12" Large Flow

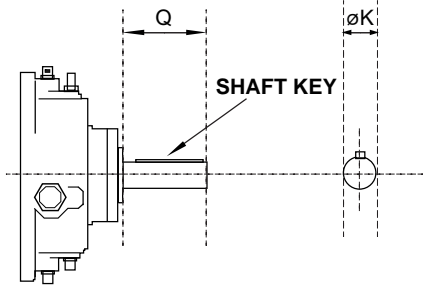


EJU: 3" - 6" High Head

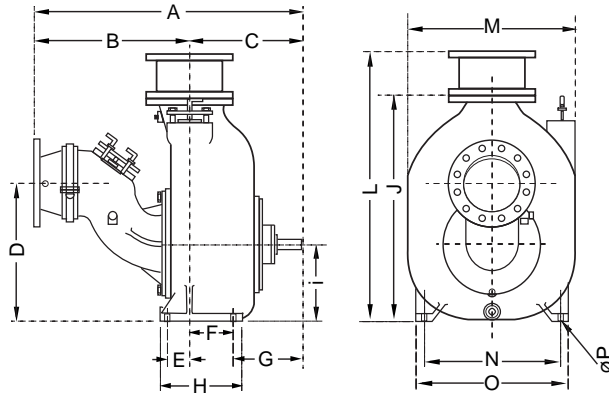


EJT - Installing Dimensions

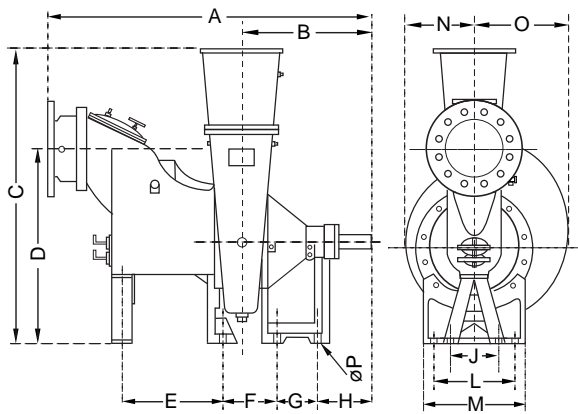
IMPELLER SHAFT



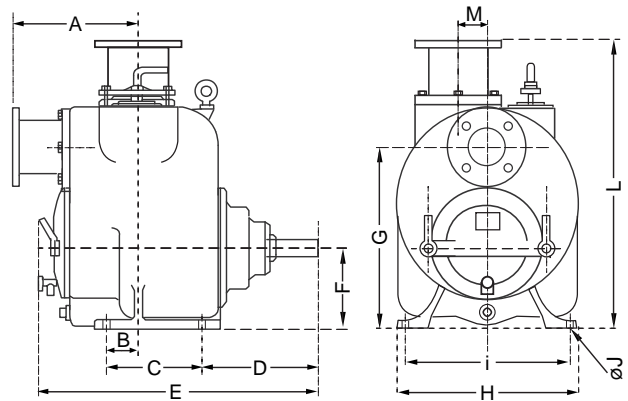
Models EJT250-375



Models EJT300-457



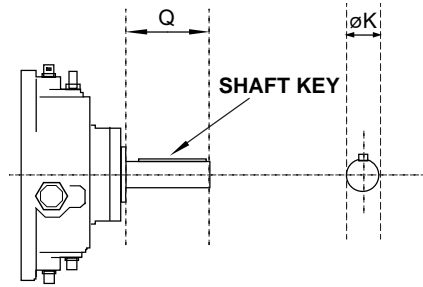
Models EJT50-160, EJT80-223, EJT100-248, EJT150-315 and EJT200-375



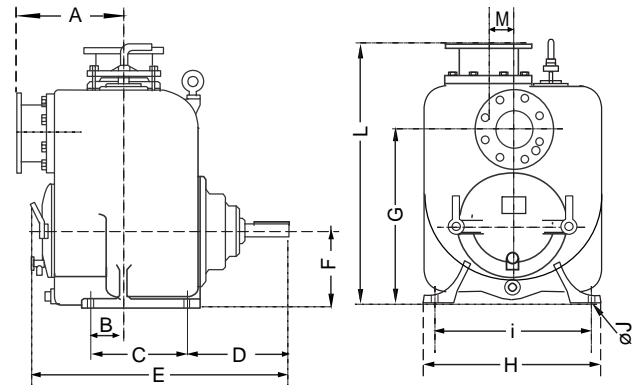
Pump Model	Port Size		Pump Dimension								Foot Dimension							Shaft End		Shipping Weight (kg)
	mm	in	A	E	F	G	L	M	N	O	B	C	D	H	I	J	P	K	Q	
EJT50-160	50	2"	235	547	152	318	523	70			54	163.2	275.0	308.3	281.0	14.0		38.1	101.6	156
EJT80-223	80	3"	294	668	191	432	687	70			76.2	228.6	284.2	431.8	393.7	17.5		38.1	101.6	270
EJT100-248	100	4"	318	768	222	495	743	70			77.8	280.0	293.7	501.7	457.2	17.5		38.1	127.0	375
EJT150-315	150	6"	406	802	257	568	897	70			77.8	279.4	293.7	577.9	527.0	17.5		38.1	127.0	487
EJT200-380	200	8"	413	1023	330	724	1068				101.6	304.8	407.1	704.9	635.0	22.4		44.5	169.9	905
EJT250-375	250	10"	1237	102	204	322	1221	786	635	705	712.0	523.3	636.5	381.0	355.6	1041.4	22.4	44.5	122.2	943
EJT300-457	300	12"	1622	508	270	203	406	508	346	467	650.0	1474.7	917.5	272.5	508.0	242.8	28.7	69.9	167.4	1100

EJU - Installing Dimensions

IMPELLER SHAFT



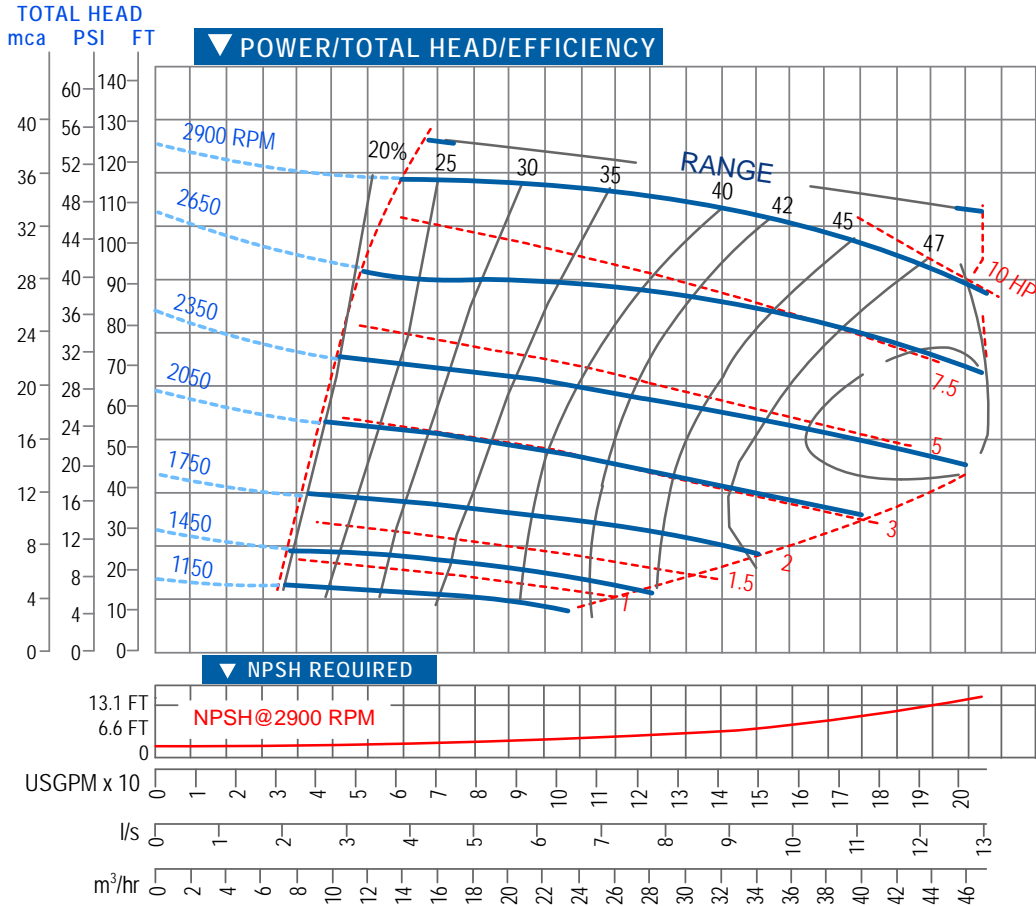
Models EJU80-280, EJT100-280, EJT150-318



Pump Model	Port Size		Pump Dimension							Foot Dimension					Shaft End		Shipping Weight (kg)
	mm	in	A	E	F	G	L	M	B	C	D	H	I	J	K	Q	
EJU80-280	80	3"	292	667	191	432	687	70	76.2	228.6	282.9	431.8	394.0	17.5	38.1	103.1	301
EJU100-280	100	4"	318	752	222	508	749	70	96.8	279.4	297.5	508.0	457.2	17.5	38.1	126.2	357
EJU150-318	150	6"	406	845	257	568	897	70	77.7	279.4	330.7	584.2	527.2	17.5	44.5	114.3	574

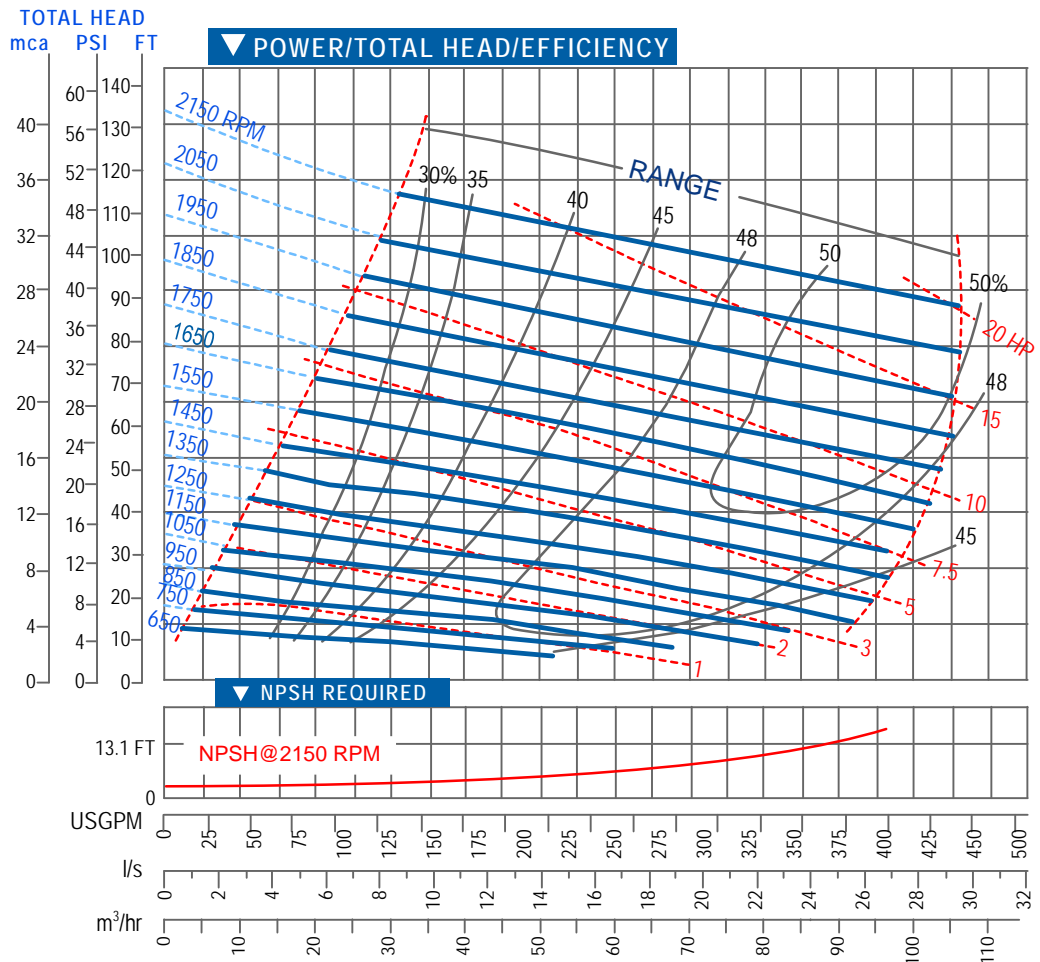
EJT 50-160 Performance Curve

Impeller Dia. 158,75mm (6.1/4")
 Max Solids 44,45mm (1.3/4")
 R.P.M. from 1150rpm to 2900rpm



EJT 80-223 Performance Curve

Impeller Dia. 222,25mm (8.3/4")
 Max Solids 63,5mm (2.1/2")
 R.P.M. from 650rpm to 2150rpm

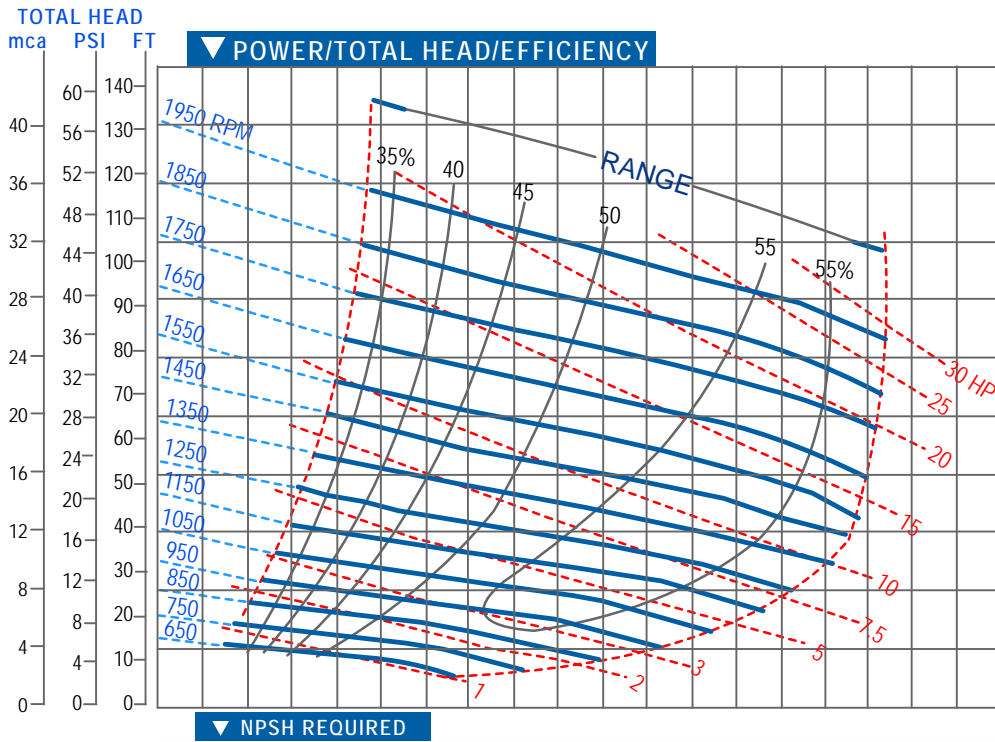


EJT 100-248 Performance Curve

Impeller Dia. 247,65mm (9.3/4")

Max Solids 76,2mm (3")

R.P.M. from 650rpm to 1950rpm



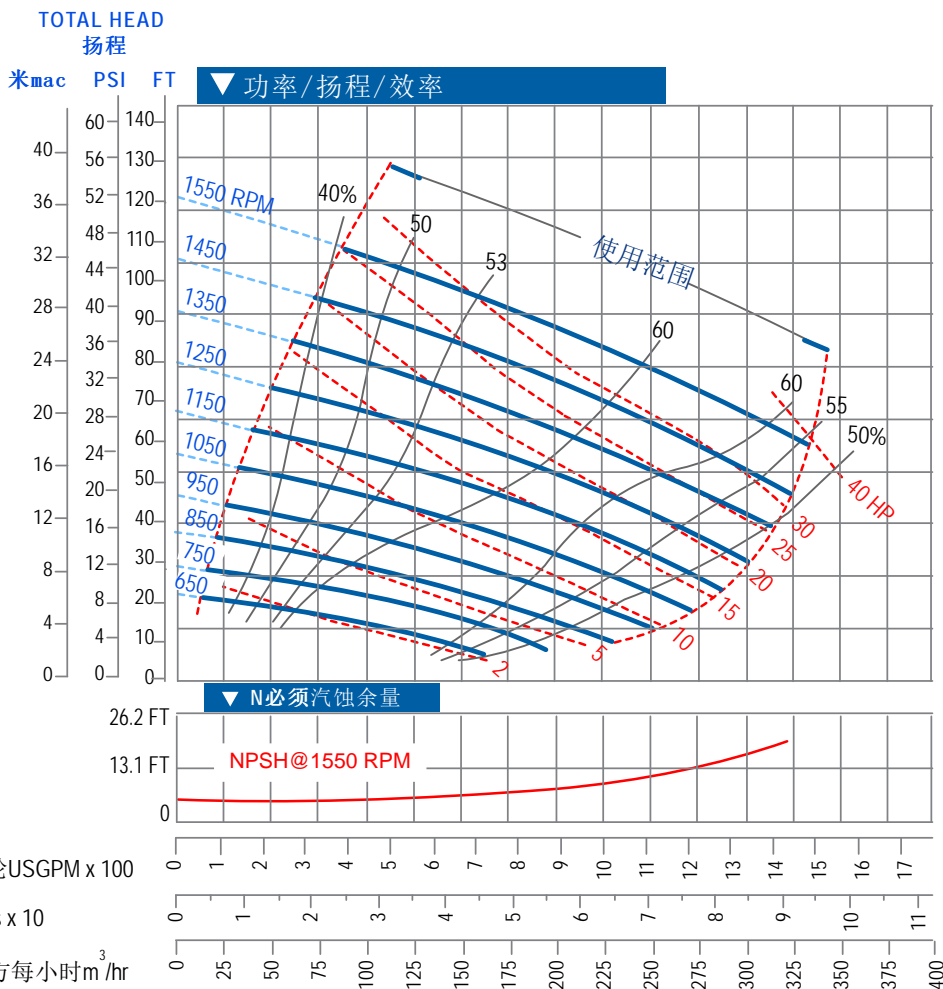
ECJ150-315

性能曲线

叶轮直径: 314,32mm (12.3/8)"

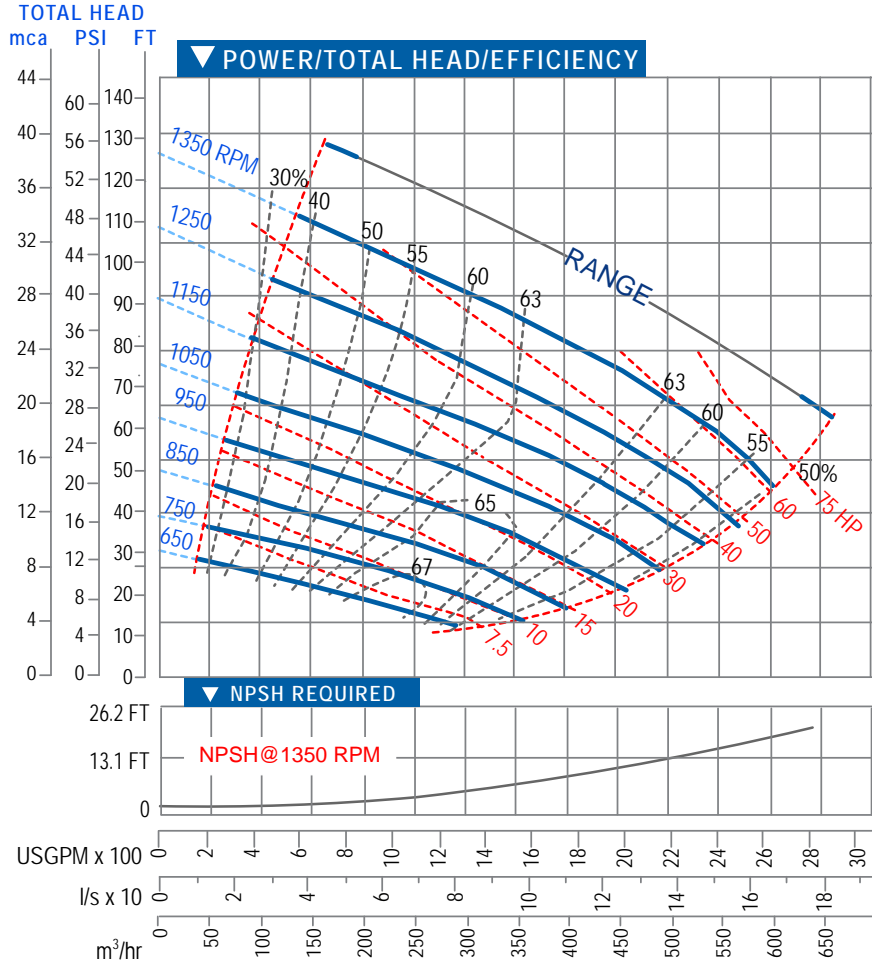
最大颗粒特: 76,2mm (3)"

转速从650到1550rpm



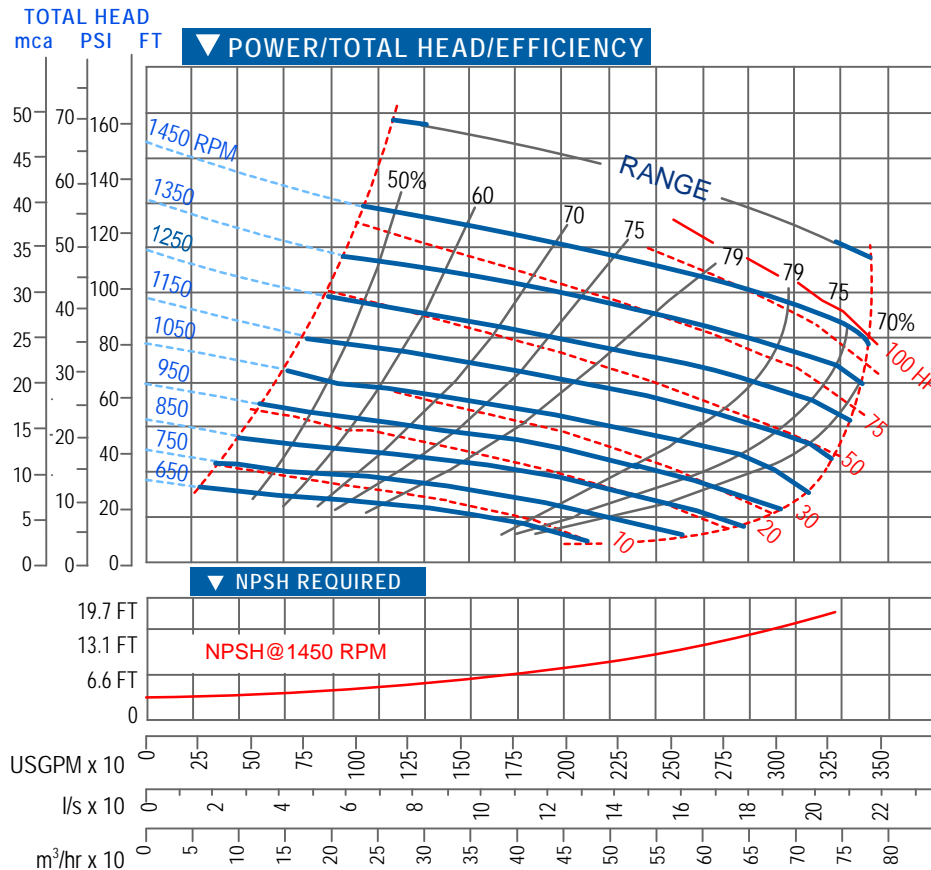
EJT 200-375 Performance Curve

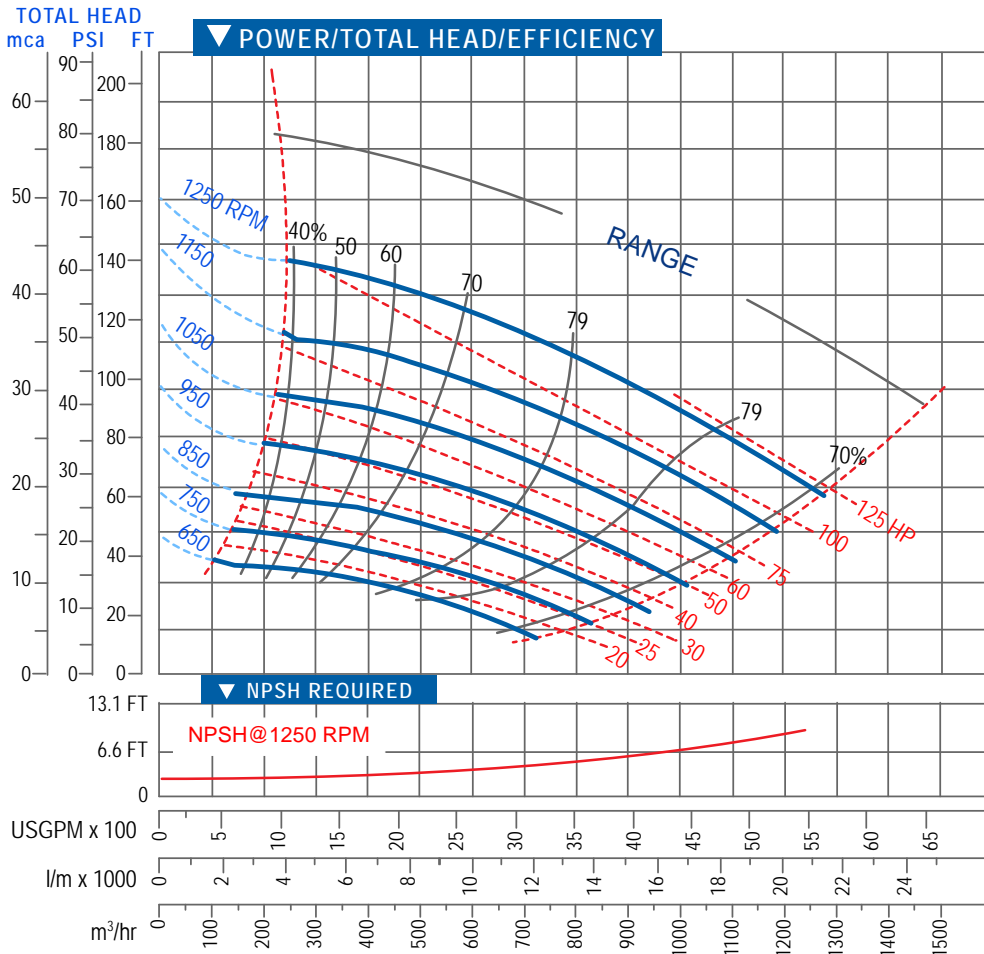
Impeller Dia. 374,65mm (14.3/4")
Max Solids 76,2mm (3")
R.P.M. from 650rpm to 1350rpm



EJT 250-375 Performance Curve

Impeller Dia. 374,65mm (14.3/4")
Max Solids 76,2mm (3")
R.P.M. from 650rpm to 1450rpm

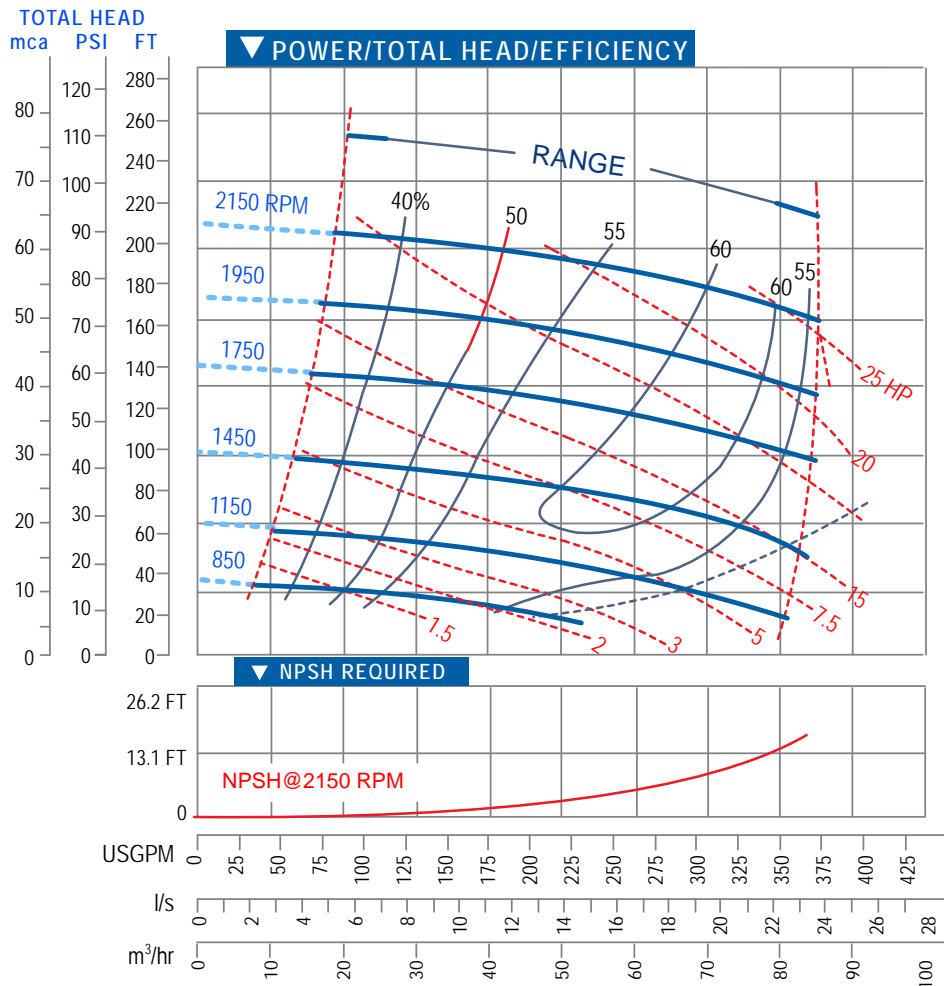




EJT 300-457

Performance Curve

Impeller Dia. 457,2mm (18")
 Max Solids 76,2mm (3")
 R.P.M. from 650rpm to 2150rpm



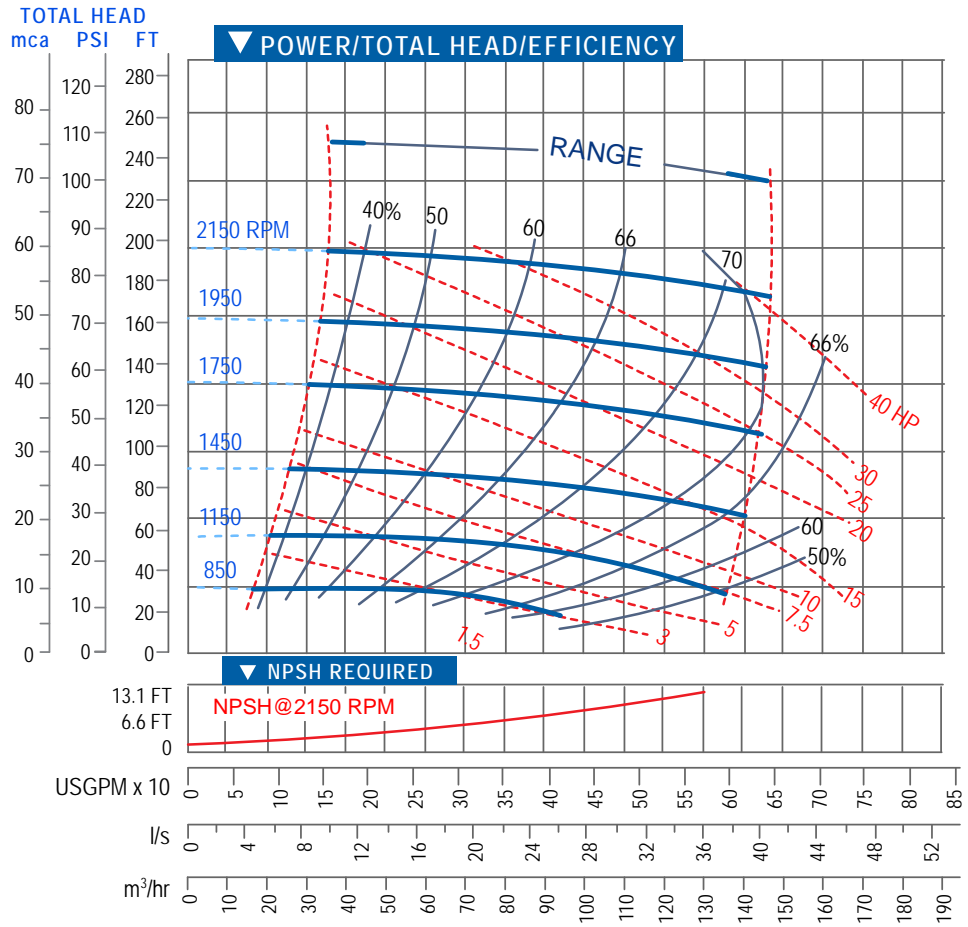
EJU 80-280

Performance Curve

Impeller Dia. 279,4mm (11")
 Max Solids 20,63mm (13/16")
 R.P.M. from 850rpm to 2150rpm

EJU 100-280 Performance Curve

Impeller Dia. 279,4mm (11")
Max Solids 28,57mm (1.1/8")
R.P.M. from 850rpm to 2150rpm



EJU 150-318 Performance Curve

Impeller Dia. 317,5mm (12.1/2")
Max Solids 31,75mm (1.1/4")
R.P.M. from 850rpm to 1950rpm

